

Setup For Finals

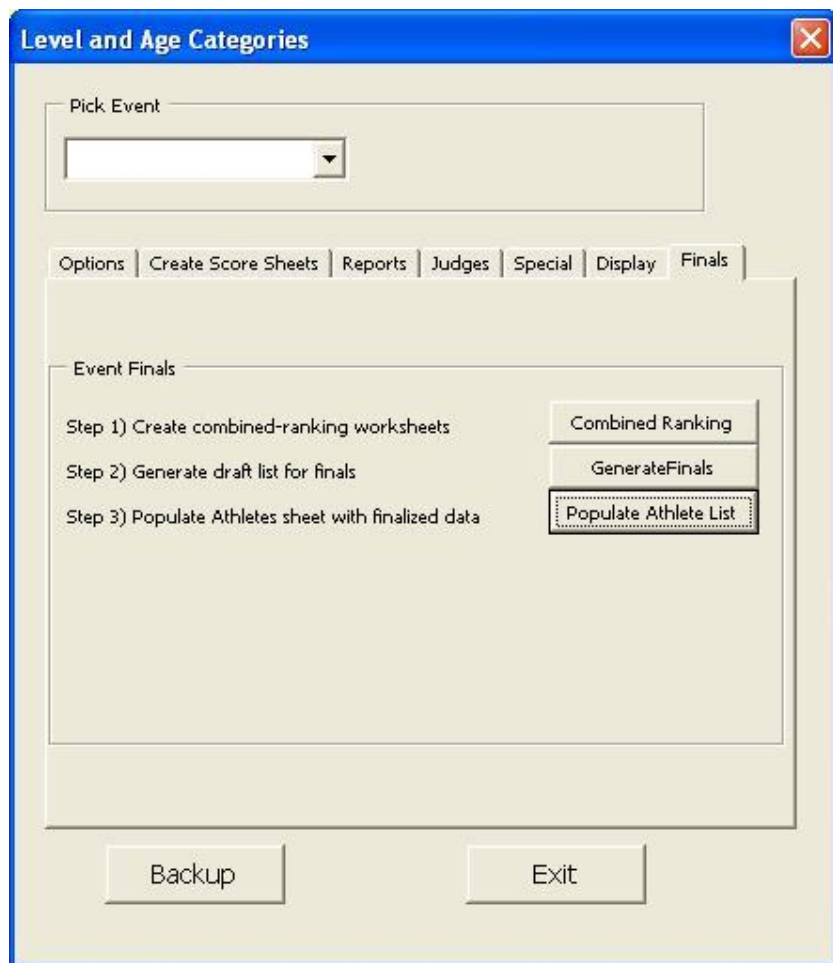
Background:

For apparatus finals, level 9 and level 10 are **ranked together**.

The program selects the top 10 gymnasts for each event to allow for substitute.

Steps:

1. Go to the Finals Tab



2. Click on the step 1 button “Combined Ranking”

This will create combined ranking sheets that will put level 9 and level 10 together.

Microsoft Excel - 2007V506-Dev.XLS

File Edit View Insert Format Tools Data Window Help

75% 14

N23 =IF(M23=0,"",IF(M54<>"",RANK(M23,INDIRECT(N54),0),""))

2008 Regional Championships

AA - Junior National (L9)				AA RANK								
ID	Name	Level	TEAM	Total	Rope	Hoop	Ball	Ribbon	Cubs	Clubs	Clubs	Clubs
115	Emily Assh	JuniorH B	B	22.500 (3)	5.800 (14)	8.000 (1)	7.500 (6)	2.800				
116	Mackenzie B.	JuniorH A	A	17.700 (16)	5.200 (11)	4.000 (18)	7.000 (13)	1.500				
117	Bree C.	JuniorH B	B	20.650 (6)	5.400 (3)	5.000 (15)	8.250 (3)	1.500				
118	Rebecca D.	JuniorH A	A	19.400 (9)	5.400 (3)	5.200 (13)	7.200 (9)	1.500				
119	Isabella E.	JuniorH B	B	18.450 (13)	5.200 (11)	5.400 (7)	6.250 (15)	1.500				
120	Cecile F.	JuniorH A	A	18.300 (15)	5.400 (3)	5.400 (7)	5.500 (18)	2.000				
121	Celeste Ferguson	JuniorH B	B	20.800 (5)	5.400 (3)	5.400 (7)	7.500 (6)	2.500				
122	Genevieve F.	JuniorH A	A	25.850 (1)	6.200 (1)	6.800 (3)	8.950 (1)	2.100				
123	Bridget C.	JuniorH B	B	16.350 (18)	4.800 (17)	4.000 (18)	7.250 (11)	1.900				
124	Ol J	JuniorH A	A	18.650 (11)	5.800 (14)	5.400 (7)	6.250 (14)	1.500				
125	Melanie Y	JuniorH B	B	19.900 (8)	5.200 (11)	5.400 (7)	7.200 (9)	2.000				
126	Grace G.	JuniorH A	A	23.000 (2)	5.400 (3)	6.250 (5)	8.950 (2)	2.500				
127	Caitlin M.	JuniorH B	B	18.600 (12)	5.400 (3)	4.250 (16)	7.250 (8)	1.500				
128	Caitlin T.	JuniorH A	A	17.500 (17)	4.900 (16)	5.250 (12)	6.250 (15)	1.000				
129	Andrea V.	JuniorH B	B	18.450 (13)	5.400 (3)	5.750 (6)	5.900 (17)	1.500				
130	Hannah W.	JuniorH A	A	18.750 (10)	5.400 (3)	5.200 (13)	7.750 (12)	1.000				
131	Lorien W.	JuniorH B	B	22.250 (4)	6.200 (1)	4.100 (17)	8.950 (4)	1.900				
132	Meika W.	JuniorH A	A	20.250 (7)	4.800 (17)	6.800 (2)	7.900 (5)	1.550				
132	Meika W.	JuniorH B	B	11.150 (19)	2.800 (19)	6.500 (4)	1.800 (19)	1.050				

3. Click on Step 2 button “Generate Finals”

Level and Age Categories

Pick Event

Senior

Options | Create Score Sheets | Reports | Judges | Special | Display | **Finals**

Event Finals

Step 1) Create combined-ranking worksheets **Combined Ranking**

Step 2) Generate draft list for finals **Generate Finals**

Step 3) Populate Athletes sheet with finalized data **Populate Athlete List**

Backup Exit

4. Verify the draft athlete List.

New ID	Orig Athlete ID	Name	Level	Team Competition	Previous	Rank
G122	122	Genevieve F.	FJRope	A	BC	1
G131	131	Lauren W.	FJRope	B	SK	1
G117	117	Brea C.	FJRope	B	BC	3
G118	118	Rebecca D.	FJRope	A	BC	3
G120	120	Cecile F.	FJRope	A	BC	3
G121	121	Celeste Ferguson	FJRope	B	BC	3
G125	125	Grace G.	FJRope	A	SK	3
G127	127	Caitlin M.	FJRope	B	SK	3
G129	129	Andrea V.	FJRope	B	SK	3
G130	130	Hannah W.	FJRope	A	SK	3
H115	115	Emily Asch	FJHoop	B	BC	1
H133	133	Melika W.	FJHoop	A	SK	2
H122	122	Genevieve F.	FJHoop	A	BC	3
H132	132	Melika W.	FJHoop	B	SK	4
H126	126	Grace G.	FJHoop	A	SK	5
H129	129	Andrea V.	FJHoop	B	SK	6
H120	120	Cecile F.	FJHoop	A	BC	7
H121	121	Celeste Ferguson	FJHoop	B	BC	7
H119	119	Isabella E.	FJHoop	B	SK	7
H125	125	Melanie Y.	FJHoop	B	SK	7
J126	126	Grace G.	FJRibbon	A	SK	1
J121	121	Celeste Ferguson	FJRibbon	B	BC	1

5. If everything is correct, click step 3 - the “Populate Athlete List” button.

The Ids and names from the AthleteFinals worksheet will be copied to the Athlete List.

Pick Event: FJRope

Options | Create Score Sheets | Reports | Judges | Special | Display | Finals

Event Finals

Step 1) Create combined-ranking worksheets [Combined Ranking]

Step 2) Generate draft list for finals [GenerateFinals]

Step 3) Populate Athletes sheet with finalized data [Populate Athlete List]

[Backup] [Exit]

6. You can then generate the necessary worksheet by using the create Score Sheet tab and buttons.

Note that all the events for the finals are preceded with the letter **F**. The next letter represents if it is Junior (**J**), Senior (**S**) or Novice (**N**).

